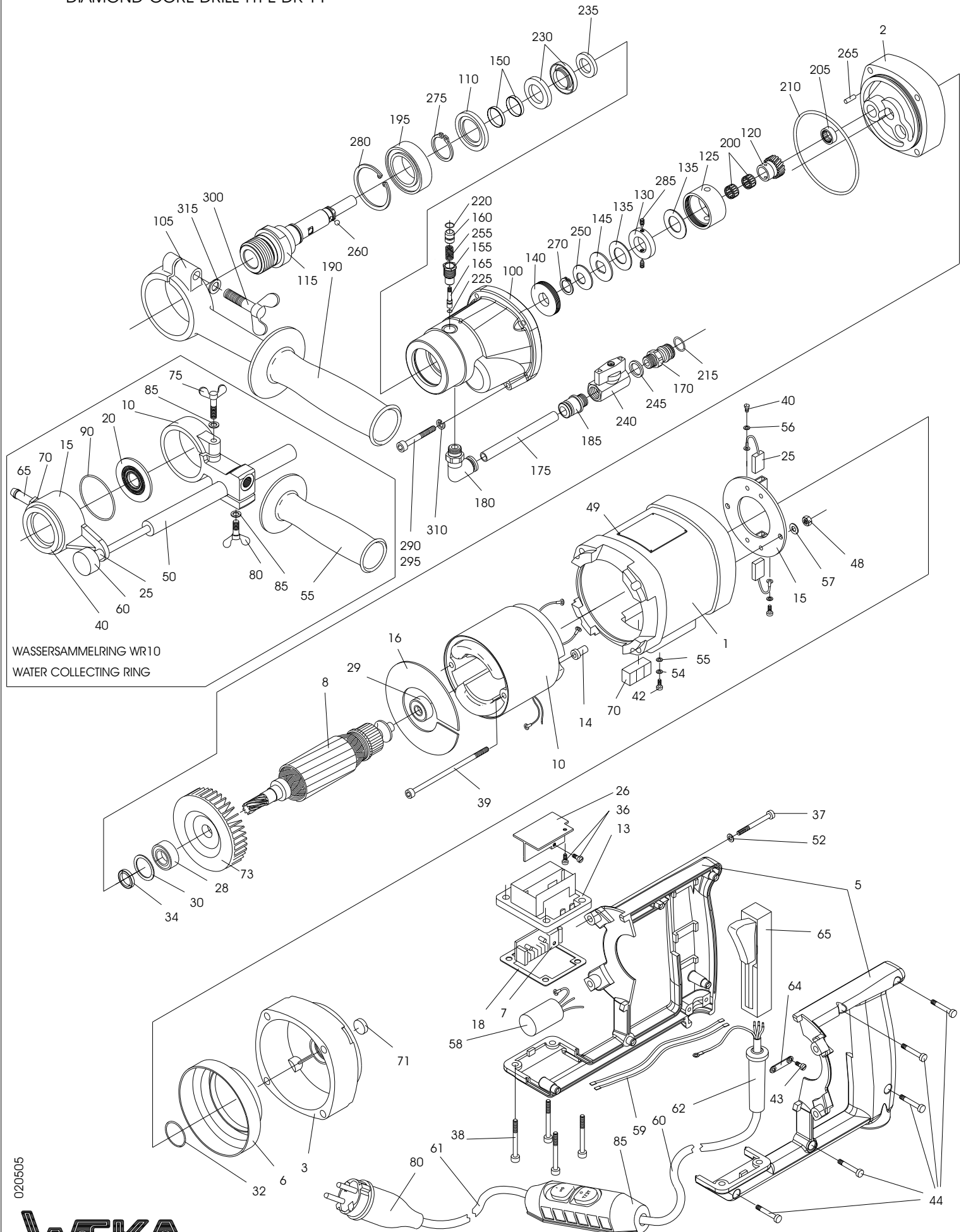


DIAMANT-KERNBOHRMASCHINE TYP DK 11

DIAMOND-CORE DRILL TYPE DK 11



WASSERSAMMELRING WR 10
WATER COLLECTING RING

020505



Spare Parts List - Diamond Core Drill Type DK 11

FIG	NO	DESCRIPTION	STANDARD	PART NO
Motor ⇒ DK 1 except				
2	1	Intermediate Flange		DK11102-1
3	1	Top Hood		DK11103
8	1	Armature with fan and bearing	230 V	DK11108-1
	1	Armature with fan and bearing	110 V	DK11108/11-1
5	1	Rear switch handle		DK11105
65	1	Motor switch	230V/110V	8015211
59	2	Motor strand	1,5²x240	8715240
44	5	Pan Head Tapping Screw	3,9x19	0539019
38	4	Hexagon socket head ssrew	M5x45	0105045
Gear				
100	1	Gear Box		DK11201
105	1	Clamp Ring		DK12202
110	1	Supporting Ring		DK11204
115	1	Drill Spindle G1/2"		DK11206
	1	Drill Spindle 1 1/4"+G1/2"		DK11206.3
	1	Drill Spindle M33x3,5/3		DK11206.8
120	1	Spur Wheel		DK11209
125	1	Clutch Sleeve		DK11216
130	1	Clutch Ring		DK11221
135	2	Brake Disk		DK11218
140	1	Supporting Disk		DK11217
145	1	Pressure Disk		DK10219
150	2	Protective Sleeve		DK11220
155	1	Locking Sleeve		DK11222
160	1	Locking Knob		DK11223
165	1	Locking Pin		DK11224
170	1	Quick Connect Nipple		DK20225
175	1	Junction Hose	5/8x110	7058110
180	1	Angle Quick Connect Nipple	G1/4"/8	7014868
185	1	Quick Connect Nipple	G1/4"/8	7014668
190	1	Handle		8900014
195	1	Ball Bearing	6004 2RS	6060044
200	2	Needle Cage	K10x13x10 TN	6310103
205	1	Needle Bush	HK1010	6310100
210	1	O-Ring	RDR78x2	5578002
215	1	O-Ring	RDR11x2,5	5511025
220	1	O-Ring	RDR7x1,5	5507015
225	1	O-Ring	RDR3,5x1,2	5503512
230	2	Rotary Shaft Seal	A18x32x7	5018327
235	1	Rotary Shaft Seal	A16x30x7	5016307
240	1	Ball Valve	G1/4"i	7014001
245	1	Sealing Ring	G1/4"	7014003
250	1	Disk Spring	28x14,2x1,5	4028142
255	1	Pressure Spring	0,8x5x12	4305012
260	1	Ball	RB-5	2205000
265	1	Parallel pin	4m6x10	2504010
270	1	Shim Ring	A14x1	3514001
275	1	Shim Ring	A20x1,2	3520012
280	1	Shim Ring	J42x1,75	2542175
285	2	Set Screw w. Dog Point	M4x8	0704008
290	1	Hexagon Socket Screw	M5x70	0105070
295	3	Hexagon Socket Screw	M5x50	0105050
300	1	Wing Screw	M6x40	0506040
305	1	Wing Screw	M6x20	0506020
310	4	Locking Washer	SM5	1805000
315	2	Medium Washer	A6,4	1806125
	1	Gear Oil	90ml	9009001
	1	Carrying Case		DK10810

Spare Parts - Water Collecting Ring WR 10

Page 2/2

FIG	NO	DESCRIPTION	STANDARD	PART NO
10	1	Clamp Ring		DK11202
15	1	Water Collecting Ring		WR10402
16	1	Water Collecting Ring cpl.		WR10
20	1	Seal Disk	universal	WR10410
	1	Seal Disk	Ø16	WR10410.16
	1	Seal Disk	Ø20	WR10410.20
	1	Seal Disk	Ø24	WR10410.24
	1	Seal Disk	Ø25	WR10410.25
	1	Seal Disk	Ø28	WR10410.28
	1	Seal Disk	Ø30	WR10410.30
	1	Seal Disk	Ø32	WR10410.32
	1	Seal Disk	Ø34	WR10410.34
25	1	Thread Bolt		WR10412
40	1	Seal Ring		WR10750
50	1	Gas Spring	WR10 stroke 200	4320003
	1	Gas Spring	WR10.3 stroke 300	4330003
	1	Gas Spring	WR10.4 stroke 450	4345003
55	1	Handle		8900014
60	1	Cushion		2830148
65	1	Hose Spout	G3/8"	7038013
70	1	Seal Ring	G3/8"	7038003
75	1	Wing Screw	M6x40	0506040
80	1	Wing Screw	M6x20	0506020
85	2	Medium Washer	A6,4	1806125
90	1	O-Ring	RDR48x4	5548040

Subject to change without notice