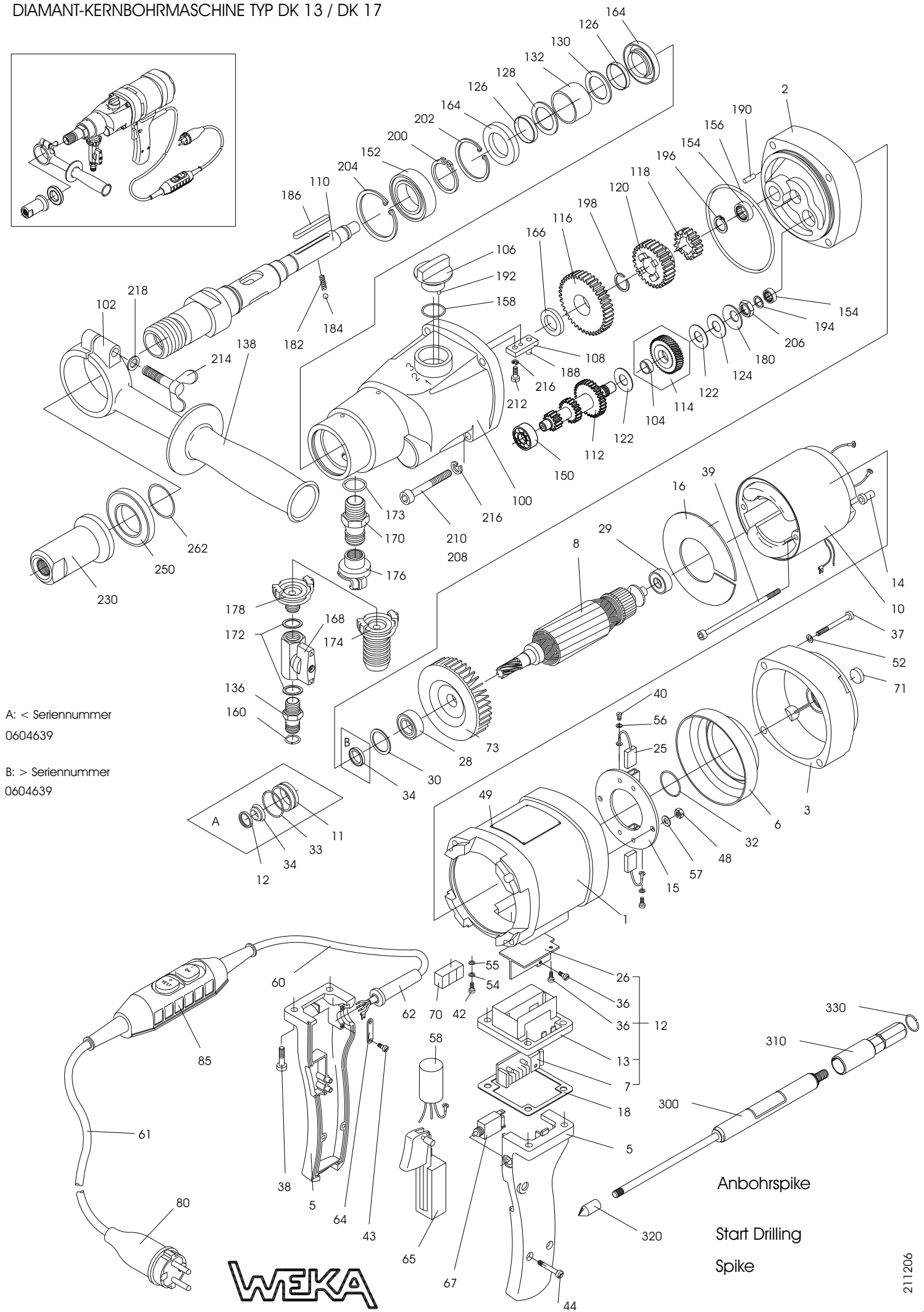
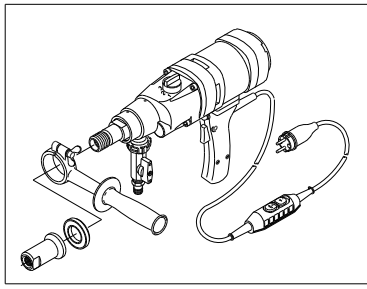


DIAMANT-KERNBOHRMASCHINE TYP DK 13 / DK 17



A: < Seriennummer  
0604639

B: > Seriennummer  
0604639

Anbohrspike  
Start Drilling  
Spike



# SPARE PARTS LIST - DIAMOND CORE DRILL TYPE DK 13/17

EE-DK13 211206

FIG NO	DESCRIPTION	PART NO DK17	PART NO DK13/17	FIG NO	DESCRIPTION	PART NO DK17	PART NO DK13/17
1	1		DK10101	100	1		DK13201
2	1		DK10102-1	102	1		DK12202
3	1		DK10103	104	1		DK10221
5	1		DK12105	106	1		DK10203
	1		DK12105/11	108	1		DK20205
6	1		DK10106	110	1		DK13206
7	1	DK16510	DK10510	112	1		DK10208
		DK16510/11	DK10510/11	114	1		DK12209
8	1			116	1		DK10212
				118	1		DK10213
				120	1		DK10214
				122	2		DK10218
10	1		DK10109	124	1		DK10219
			DK10109/11	126	2		DK13220
12	1		DK16520	128	1		DK13222
			DK10520	130	1		DK13223
			DK10520/11	132	1		DK13210
13	1		DK10135	136	1		DK20225
14	2		DK10116	138	1		8900014
15	1	230 V	DK10117	150	1		6062900
		110 V	DK10118	152	1	629	6060282
16	1		DK10122	154	2	60/28 2RS	6310100
18	1		DK10125	156	1	HK1010	5578002
25	2	230 V	DK10125/11	158	1	RDR78x2	5520003
		110 V	DK10140	160	1	RDR20x3	5511025
26	1	230 V	6060011	164	2	RDR11x2,5	5028477
28	1		6060002	166	1	28x47x7	5022357
29	1		2628171	168	1	AD22x35x7	7014001
30	1		4526025		1	G1/4"i/i	7014005
32	1	RDR26x2,5	5012247	170	1		DK13227
34	1	RWD12x24x7	0504006	172	2	G3/4"	7014003
36	2	M4x6	0105035	173	1	G1/4"	7034003
37	4	M5x35	0205025	174	1	ø32	7000532
38	4	M5x25	0204100		1	ø38	7000538
39	2	M4x100	0203005	176	1	G3/4"	7034500
40	2	M3x5	0304006	178	1	G1/4"	7014500
42	1	M4x6	0539095	180	1		4028142
43	2		0539019	182	1		4305016
44	2		1004000	184	1	0,5x3,2x16	2204000
48	2	M4	2223004	186	1	RB-4	3005040
49	4	2,3x4	1805000	188	1	A5x5x40	2505015
52	4	SM5	1804137	190	1	5m6x15	2504010
54	1	A4	1804433	192	1	4m6x10	2503016
55	1	4,3	1803433	194	1	3m6x16	1910161
56	2	3,2	1804125	196	1	PS10x16x1	3514001
57	2	4,3x9x1	DK10130	198	1	AV14	3618000
58	1		8715151	200	1	SW18	3528015
60	1		8723151	202	1	28x1,5	3447175
61	1		8738151	204	1	47x1,75	3452002
			8740141	206	1	52x2	1012015
				208	1	BM12x1,5	0105080
62	1	8738251	8701000	210	3	M5x80	0105050
64	1		8800010	212	1	M5x12	0105012
65	1		8015212	214	1	M6x40	0506040
67	1		8010615	216	5	SM5	1805000
70	1	110 V	7510029	218	1	A 6	1806125
71	1		7500015		1	160 ml	9012001
73	1		DK20105				
80	1	16 A	8016013	230	1		DK13240
			DK20620	250	1		AE35
85	1	10mA 230 V	8400010	262	1	RDR32x1,5	5532015
		10mA 110 V	8400110		1		DK10810
300	1	AS13	4315010				
310	1	AS13	AS13850				
320	1	AS13	AS13860				
330	1	AS13	3618001				

Please specify in case of spare part orders:  
Machine No., Quantity, Description, Part No. and for electrical parts the voltage.

WEKA Elektrowerkzeuge  
Auf der Höhe 20, D 75387 Neubulach  
Telephone: +49 7053 96816-0 · Telefax: +49 7053 3138  
Internet: <http://www.weka-elektrowerkzeuge.de>  
Email: [weka@weka-elektrowerkzeuge.de](mailto:weka@weka-elektrowerkzeuge.de)