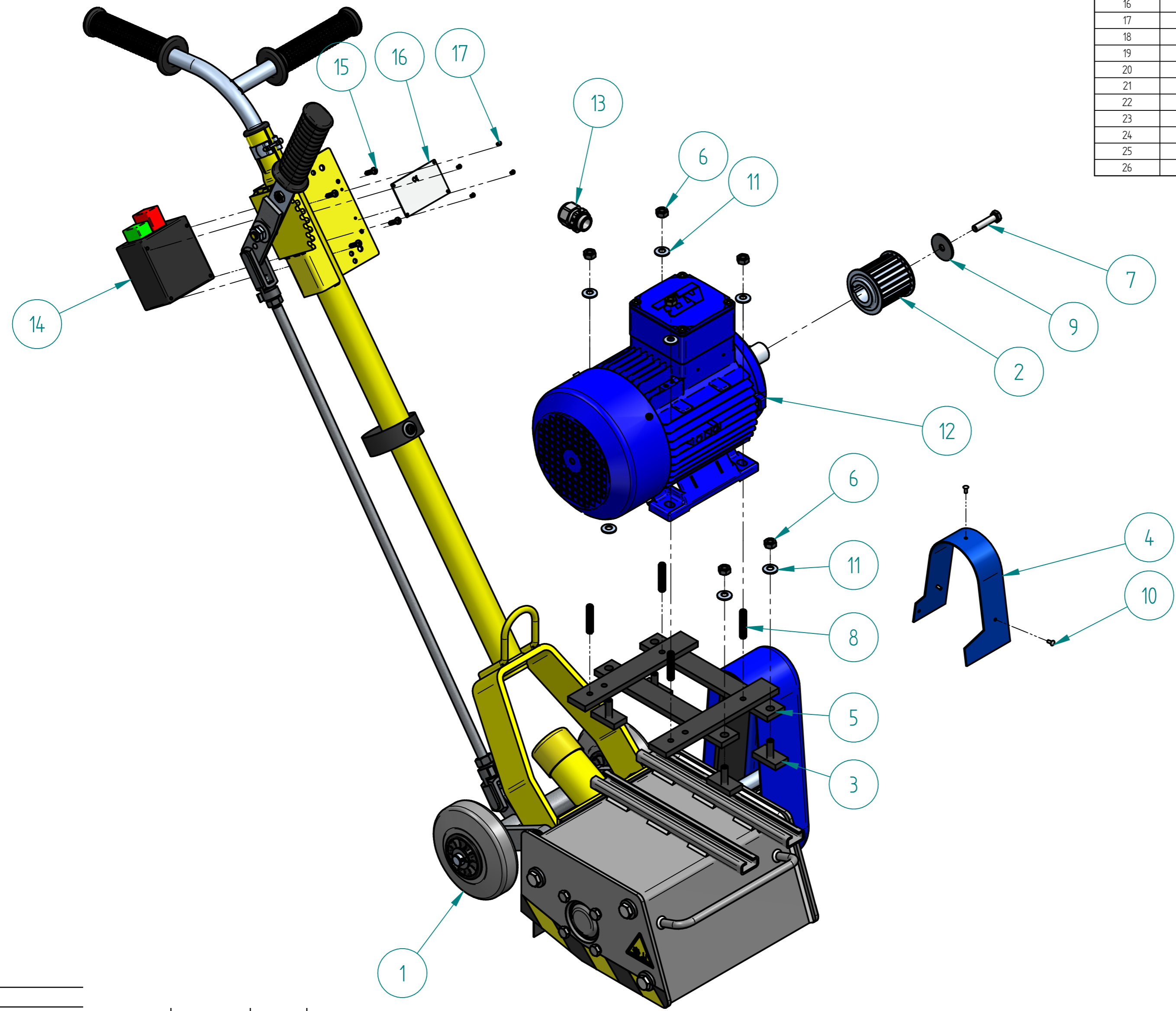


TOLERANCES acc. to ISO / TOLERANSEER entl. ISO  
 Applicable where no tolerance is indicated.  
 Gäller där tolerans ej direkt utformats  
 For machining / For bearbetning ISO 2768-mk  
 For welding / For svetsning ISO-DIN ISO 13920-BF  
 Surface finish acc. to ISO 15022 Machined surfaces  
 Ytjämnhet enligt ISO 1302. For bearbetade ytor.

Item	Artikelnummer	Document Number	Title	Quantity
1	800021	800021a	BASIC MACHINE FR200 GENUS	1
2	701341	625.04.02a	TOOTHED PULLEY ELECTROMOTOR FR	1
3	701345	625.04.06e	SCREW	4
4	706201	625.26.02e	ADDITIONAL BELT GUARD	1
5	701343	625.04.09c	STRETCHING RAIL	1
6	101822	BN_117_M8	HEXAGONAL NUT ~0.80	8
7	106706	BN_56_M8x35	HEXAGON HEAD SCREW	1
8	107591		HEXAGON SOCKET SET SCREW WITH FLAT POINT M8X40, DIN 913	4
9	108581	BN_732_M8	WASHER WITHOUT CHAMFER	1
10	112082		RIVET POP TLP/D429	3
11	113918	BN_13292_M8	RIP-LOCK LOCKING WASHER	8
12	109372		ELECTRIC MOTOR SINGLE P	1
13	114813		SCREWED CABLE GLAND M20 PLAST	1
14	109373		SWITCH ASSEMBLED 230V	1
15	109627		CROSS RECESSED PAN HEAD TAPPING SCREW ST4,2X19, DIN 7981	4
16	703559	788.42.31d	TYPE PLATE	1
17	108214	BN_924_TAP_D320	POP RIVET TAP/D320	4
18	105284		EL. WIRE 1 MM2 BLACK	0,12
19	114988		CABLE END SLEEVE 1 MM2	1
20	109332		CABLE STRAPS	5
21	111182		STICKER -CAUTION HIGH VOLTAGE-	1
22	703542		ARROW	1
23	900478		INSULATED RING TERMINAL Ø5, 1mm²	1
24	109068		ELECTRIC CONNECTOR	3
25	900042		LOCTITE 243	0,02
26	900016		UNINSULATED WIRE TERMINAL 1,5mm2	1



Rev. No	Revision description	Date	MS
a	Wire end terminals adjusted.	07/10/2021	MS
b	Wire end terminal adjusted.	14/02/2022	MS

Material		Dimension	
Units : mm	SIZE A2		
Drawn By MS	Date 22/03/2021	Approved Date 14/02/2022	Approved By MS
		Description FR 200 WITH ELECTROMOTOR 230 V Genus	Article Number 701447G
		DWG NO 625.26.00Gb	
Part/Assembly File 6252600G.asm		sheet of 1 4	Rev. b

THE INFORMATION CONTAINED IN THIS DRAWING IS THE SOLE PROPERTY OF VON ARX. EOOD REPRODUCTION IN PART OR WHOLE WITHOUT THE WRITTEN PERMISSION OF VON ARX. EOOD IS PROHIBITED.

TOLERANCES acc. to ISO / TOLERANSEER enl. ISO  
 Applicable where no tolerance is indicated.  
 Gäller där tolerans ej direkt utsatts  
 For machining / För bearbetning: ISO 2768-mK  
 For welding / För svetsning: SS-EN ISO 13920-BF  
 Surface finish acc. to: ISO 1302 Machined surfaces.  
 Ytjämnhet enligt: ISO 1302. För bearbetade ytor.

109372  
 ELECTRIC MOTOR SINGLE-P



109373  
 SWITCH ASSEMBLED 230V



109372  
 ELECTRIC MOTOR SINGLE-P

Motor (TK2)



105284  
 EL. WIRE 1 MM2 BLACK (0.12m)







109372  
 ELECTRIC MOTOR SINGLE-P

(U1) Motor





Кабелни накрайници  
 (Зачистете всички кабели на 8 mm!)

-  114988 CABLE END SLEEVE 1 MM<sup>2</sup> (1 бр.)
-  900016 UNINSULATED WIRE TERMINAL 1,5mm<sup>2</sup> (1 бр.)
-  109068 ELECTRIC CONNECTOR (3 бр.)
-  900478 INSULATED RING TERMINAL Ø 5, 1 MM<sup>2</sup> (1 бр.) - Pe

Material	Dimension
----------	-----------

Drawn By MS	Date 22/03/2021	Approved Date 14/02/2022	Approved By MS	Units : mm	SIZE A4
----------------	--------------------	-----------------------------	-------------------	------------	---------

	Description FR 200 WITH ELECTROMOTOR 230 V Genus	Article Number 701447G
		DWG NO 625.26.00Gb

Part/Assembly File 6252600G.asm	sheet of 2 4		Rev. b
------------------------------------	-----------------	---	--------