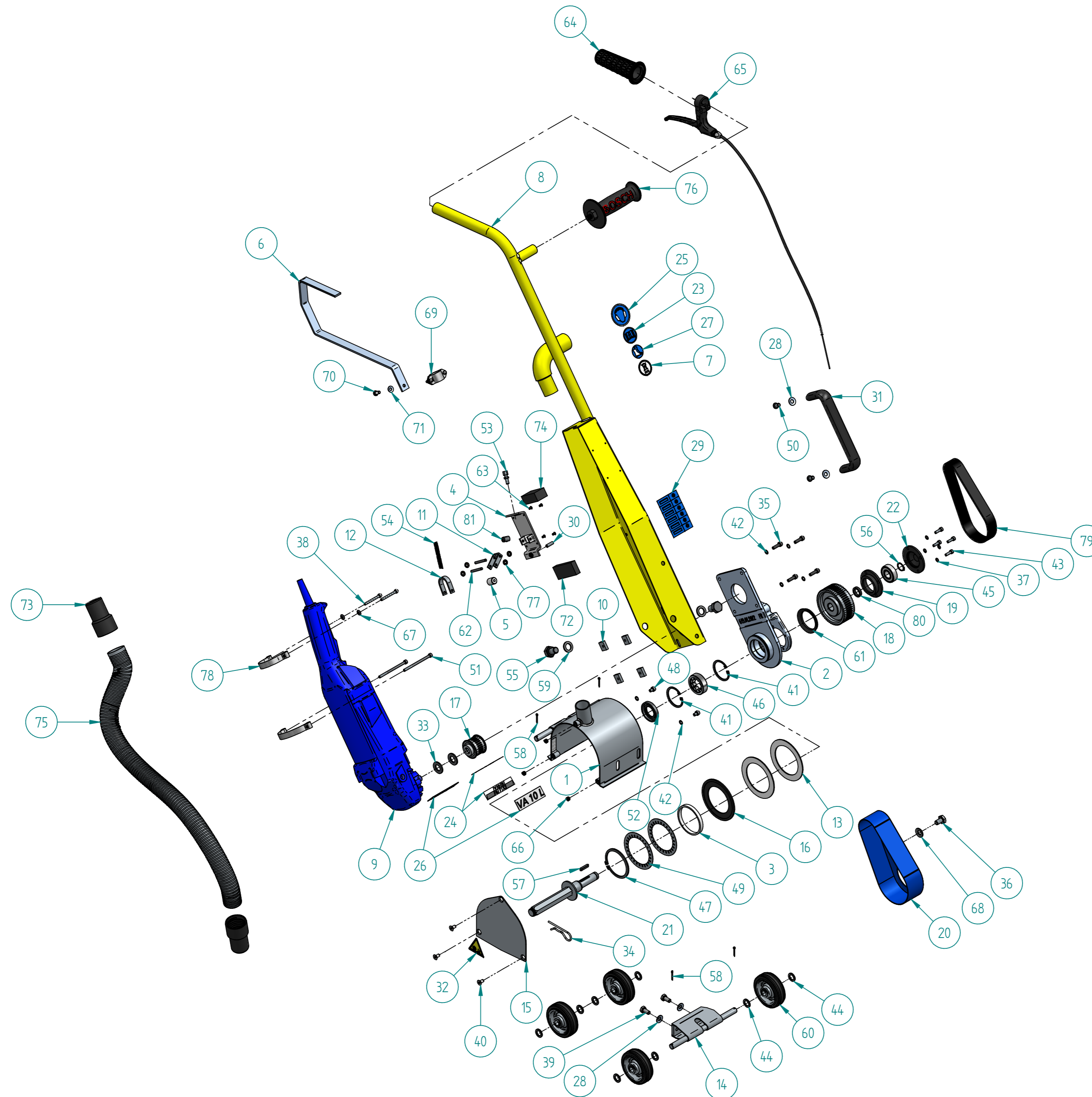


TOLERANCES acc. to ISO / TOLERANSEER entl. ISO
 Applicable where no tolerance is indicated.
 Gäller där tolerans ej direkt utsatts
 For machining / For bearbejning ISO 2768-mk
 For welding / For svetsning ISO EN ISO 13920-BF
 Surface finish acc. to ISO 15022 Machined surfaces
 Ytjämbhet enligt ISO 1302. For bearbetade ytor.




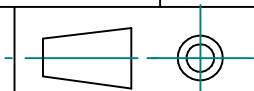
THE INFORMATION CONTAINED IN THIS DRAWING IS THE SOLE PROPERTY OF
 VON ARX. EOOD REPRODUCTION IN PART OR WHOLE WITHOUT
 THE WRITTEN PERMISSION OF VON ARX. EOOD IS PROHIBITED.

Material		Dimension	
Units : mm	SIZE A2		
Drawn By GS	Date 14/01/2020	Approved Date 11.02.2020	Approved By MS
		Description VA 10 L - 230V/EU	Article Number 706469
		DWG NO 619.00.00i	
Part/Assembly File 6190000.asm		sheet of 1 2	Rev. i

TOLERANCES acc. to ISO / TOLERANSER enl. ISO
 Applicable where no tolerance is indicated.
 Gäller där tolerans ej direkt utsatts
 For machining / For bearbetning: ISO 2768-mK
 For welding / For svetsning: SS-EN ISO 13920-BF
 Surface finish acc. to ISO 1302 Machined surfaces.
 Ytjämnhet enligt ISO 1302 For bearbetade ytor.

Item	Artikelnummer	Document Number	Title	Quantity	Item	Artikelnummer	Document Number	Title	Quantity
43	100595	BN_3_M5x16	HEXAGON SOCKET HEAD CAP SCREW	4	1	706448	619.01.01f	HOUSING	1
44	101829	BN 726 13x20x2	SPACER WITHOUT CHAMFER	8	2	706450	619.01.20b	HOUSING JOINT	1
45	108259	794.70.40	BALL BEARING	1	3	706455	619.01.16	PLASTIC RING	1
46	108288	794.72.03	CYLINDER ROLLER BEARING	1	4	706463	619.01.06b	BASE PLATE	1
47	112288	BN 818 65x2.5	SAFETY RING	1	5	706465	619.01.12a	WHEEL	1
48	102273	BN 3 M6x8	ALLEN SCREW	2	6	706755	619.01.21a	PROTECTION HANDLE	1
49	103791	792.75.28	SAUCER SPRING	2	7	708794	625.01.36	ADHESIVE "NO HOUSEHOLD WASTE"	1
50	112300	BN 1206 M8x12	ALLEN SCREW	2	8	709936	619.01.37	SCREW LOCKFIL	1
51	112301	BN 4 M5x80	ALLEN SCREW	2	9	710249	619.20.04	ANGEL GRINDER 230V/EU COMPLETE	1
52	112289	619.01.23	RADIAL SHAFT SEAL	1	10	706468	619.01.11a	THREADED PLATE	4
53	112297	619.01.29	ADJUSTING SCREW	1	11	706466	619.01.07	BOW	1
54	112298	619.01.30	COMPRESSION SPRING	1	12	706464	619.01.08	CIRCUIT BOW	1
55	105198	BN 56 M14x20	HEXAGON HEAD SCREW	2	13	708034	619.01.36	PLASTIC SPACER	2
56	107589	DIN 471 A17	SAFETY RING	1	14	706452	619.01.03	WHEEL AXLE, FRONT	1
57	107996	BN 870 5x5x25	SPRING KEY	1	15	706453	619.01.05	HOUSING COVER	1
58	108360	BN 912 2.5x18	SPLINT PIN	4	16	706454	619.01.15	OPPOSITE PULLEY	1
59	108556	BN 726 M14	WASHER	2	17	706456	619.01.19	TOOTHED WHEEL	1
60	112285	619.01.22	BONDED TIRED WHEEL	4	18	706457	619.01.18a	HOFMANN TOOTHED WHEEL	1
61	112290	619.01.24	V-SEAL VA-0045	1	19	706459	619.01.14	CLAMPING	1
62	112291	BN 855 5h8x40	CYLINDER PIN	2	20	706461	619.01.04a	BELT GUARD VA 10 L	1
63	112303	BN_920_3.2x9	BLIND RIVET	4	21	706467	619.01.09a	MAIN SHAFT	1
64	112739	619.01.34	PLASTIC HANDLE	1	22	706460	619.01.13	BEARING COVER	1
65	112740	619.01.33	BRAKE LEVER COMPL	1	23	706129	788.42.66	STICKER "INFO"	1
66	112776	792.75.37	SCREW LOCKFIL	3	24	703551	788.42.20	COMPANY LOGO 85X19MM	2
67	115448	BN 10614 M6	SPHERIC WASHER M6 / DIN 6319	2	25	701669	630.02.47	STICKER: AUDITORI PROTECTION	1
68	113919	BN_13292_M10	SAFETY WASHER	1	26	115653	619.00.04	STICKER "VA 10 L"	2
69	101879	792.75.38	PIPE CLAMP	1	27	115647		STRIPE BAND LABEL Nr.6021	1
70	104197	BN_56_M6x12	HEXAGON HEAD SCREW	1	28	113918	BN_13292_M8	RIP-LOCK LOCKING WASHER	4
71	113917	BN_13292_M6	RIP-LOCK LOCKING WASHER	1	29	112450		SICKER - DIF.CUTTERS-	1
72	112287	792.75.27	RUBBER PROFILE 30 X 12	0.08	30	112302	BN_24_M6x20	WORM PIN	1
73	112913	619.01.32	PLASTIC CONNECTION SCREW	2	31	112294	619.01.26	BOW HANDLE	1
74	115447		RUBBER PROFILE 30 X 20	0.06	32	111339	625.00.04	STICKER "WARNING CUTTER SHAFT"	1
75	112299	619.01.31	VAKUFLEX-TUBING	0.66	33	108557	BN_715_M14	WASHER WITHOUT CHAMFER	2
76	112659	619.20.02	PLASTIC GRIP	1	34	108379	BN_915_D3	COTTER SPRING	1
77	112292	BN 30723 D_5	RETAINING RING	4	35	103196	BN_3_M6x20	HEXAGON SOCKET HEAD CAP SCREW	4
78	706462	619.01.10	FIXING STRAP	2	36	102289	BN_56_M10x16	HEXAGON HEAD SCREW	1
79	112293	619.01.25	TOOTHED BELT SYNCHROFLEX AT5	1	37	102285	BN_792_M5	SAFETY WASHER	4
80	706458	619.01.17	WASHER	1	38	101861	BN_4_M5x45	CYLINDER HEAD SCREW	2
81	900132		SCREW NIPPLE	1	39	101599	BN_56_M8x16	HEXAGONAL SCREW	2
82	703542	788.42.09	ARROW	1	40	100652	BN_1422_M6x12	COUNTERSUNK SCREW	3
83	900018		LABEL SWISS DESIGN	1	41	100623	BN_823_D47	SAFETY RING	2
84	111727		STRIPE BAND -DANGER-	0.16	42	100616	BN_792_M6	SAFETY WASHER SCHNORR®	6
85	900042		LOCTITE 243	0.01					
86	900105		LOCTITE 480	0.05					

Material Dimension
 Units : mm SIZE A3

Drawn By GS	Date 14/01/2020	Approved Date 11.02.2020	Approved By MS		Description VA 10 L - 230V/EU	Article Number 706469
Part/Assembly File 6190000.asm						DWG NO 619.00.00i
sheet of 2 2					Rev. i	

THE INFORMATION CONTAINED IN THIS DRAWING IS THE SOLE PROPERTY OF
 VON ARX EOOD REPRODUCTION IN PART OR WHOLE WITHOUT
 THE WRITTEN PERMISSION OF VON ARX EOOD IS PROHIBITED